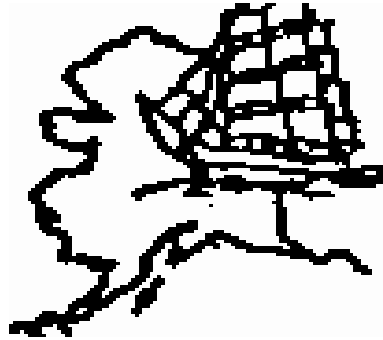


The Cook Inlet Kennel Club GAZETTE



The LEONBERGER STANDARD

(Moving to the Working Group June 30, 2010)

General Appearance

The Leonberger is a calm, non-aggressive, large, muscular, working dog with a proud head carriage. He is distinguished by his balanced build, black mask, and double coat. Adult males, in particular, are powerful and strong and carry a lion-like mane on the neck and chest. A dog or bitch is easily discernable as such. For its size, the Leonberger is light on its feet and graceful in motion. Because natural appearance is essential to breed type, the Leonberger is to be shown with no trimming, sculpting or other alterations of the coat.

True to his original purpose as a family, farm and draft dog, today's Leonberger excels as a multi-purpose working dog; the most important task being a reliable family companion. The Leonberger is vigilant, obedient and quietly confident in all situations. He exudes good-natured watchfulness, depicting intelligence and vigor.

Size, Proportion, Substance

Size: A mature (18 months) male, when measured at the withers, is 28 to 31.5 inches in height at the highest point of the shoulder blades (30 inches preferred). The mature (18 months) female is 25.5 inches to 29.5 inches (27.5 inches preferred). Weight is in proportion to the overall size and structure. When proportion, substance, and balance are present, a slight variation above standard is tolerated.

Proportion: Height is measured at the withers; body length is measured from point of shoulder to point of buttocks. Desired proportion of height at withers to length of body is 9 to 10. The depth of chest is ideally 50 percent of the height at withers; brisket reaches to elbow. The angulation of front and rear quarters is in balance. Overall balance and proportion are equally as im-



portant as size.

Substance: Bone is medium to heavy and in proportion to size of body with sufficient muscle to support frame.

Head

The head, in its entirety, is deeper than it is broad, rectangular shaped. The length of muzzle to length of back skull is approximately equal, with no wrinkles, and cheeks are only slightly developed. Males have a strong masculine head while female heads express femininity.

Expression/Mask: A good-natured, soft, and intelligent expression is required. Face is covered with a full black mask that extends from the nose up to and over the eyes. A lesser mask is acceptable, but not desirable. **Eyes:** Dark brown is preferred over light brown. Eyes are medium size, oval to almond shaped, neither deep-set nor protruding, neither too close together nor too wide apart. Eyelids are close fitting, not showing any haw. **Ears:** When alert, ears are level with top of skull and set slightly forward. Ears are of medium size, triangular, fleshy, hanging flat and close to the head. Tip of ears are level with corners of the mouth.

Skull: As seen from the front and in profile, backskull is slightly arched. Skull is slightly longer than wide and the width of back skull is only slightly broader than it is at the eyes. **Stop:** Clearly recognizable and moderately defined.

Muzzle: Rather long, never running to a point, nasal bridge of even breadth, can be slightly arched (Roman nose) or level; never dipped. The jaw remains broad and strong between the canines.

Planes: As seen from the side, the planes of muzzle and skull are parallel; planes rather close as defined by the moderate stop. **Nose:** Large with clearly outlined nostrils, always black. **Lips:** Tight, outer lips are black in color, with corners of lips closed and dry. Some de-

2010 Board Members

President— Carolyn Tolson
(745-2322)

V-President—Cheri Hagen

Treasurer—Kristine Asay

Corresponding Secretary—
Rene'e Clayton

Recording Secretary -
Gretchen Keim

Directors -

Mike Chester

Kathy Kochendorfer

Judi Rideout

Jon Zylstra

2010 Committee Chairs

Judges Committee -

Training Committee -

Show Committee—

Carolyn Tolson

Hospitality Committee -

Rene'e Clayton

Earthdog Committee -

Carolyn Tolson

**COME JOIN US AT OUR
NEXT GENERAL
MEMBERSHIP
MEETING!**

JUNE 1st AT 7:00 P.M.

Inside this issue:

General Meeting Minutes 2

Board Meeting Minutes 2

**The Leonberger Standard 3 & 5
Continued**

Upcoming Events 3

Advertising Rates 3

Calendar 4

Minutes
General Meeting
May 4, 2010

Meeting called to order at 7:03 p.m.
Motion made to accept minutes as published by Cheri Hagen, seconded by Chris Asay.

Corresponding Secretary Report:
Check from University of Alaska for \$70.00

MEA Bill
Enstar Bill

Confirm to judge and slate approval from Peter Bauer for August, 2010
Confirm to judge and slate approval from Annella Cooper for November, 2010

Slate approval from Dr. Ronald Spritzer for November, 2010
Slate approval from Fred Bassett for November, 2010

Treasurer's Report:

Show Committee Report: Premium list has been sent to BaRay. Volunteers will be needed so please help as much as you can. Next meetings are scheduled for 6/1/10, 7/6/10 and

8/3/10. All are at 6:30 p.m.

Training Committee Report: Next meeting is May 11 at 6:30 p.m.

Legislative Committee: No report.

Judge's Committee: No report.

Earthdog Committee: Meeting June 1 at 6:00 p.m. at the building.

New Members:

First Reading – Monty, Carmen and Alora Hart. They own Pomeranians Mike Weber. He owns Weimeraners

Second Reading – Mike Hemmer, voted on and approved.

Valerie Rappleyea, voted on and approved. Welcome Mike and Valerie.

Unfinished Business:

Mats – The mat cleaning party went well. The mats from the show weren't cleaned so Chris Asay and Carolyn Tolson will finish them.

New Business:

Please note: DO NOT PUT DOG FE-CES DOWN THE TOILET! It does not dissolve and plugs the lines. A plumber had to be called to clean the drain line because of this problem.

Kathy Kochendorfer makes a motion to purchase a steam cleaner. Judi Rideout seconded. Discussion regarding cost and type of cleaner was held. Cheri Hagen

will purchase the cleaner. Cost should be around \$100. Motion passes.

Carolyn will research new mats for the top of our puzzle mats in the building. The soft mats we have now are not holding up well and tear easily.

Motion to adjourn made by Mike Chester, seconded by Cheri Hagen. Meeting adjourned at 7:25 p.m.

Respectfully Submitted,

Cheri Hagen



Minutes
Board Meeting
May 18, 2010

Meeting called to order at 7:07 pm

Cheri Hagen made a motion to accept the General Membership Minutes Board Minutes as published. Gretchen Keim seconded. Motion passed.

Corresponding Secretary Report

Check from University of Alaska for \$70.00

-MEA Bill
-Enstar Bill

-Confirmation to judge and slate approval for Peter Bauer for August 2010

-Confirmation to judge and slate approval for Annella Cooper for November 2010

-Slate approval from Dr. Ronald Spritzer for November 2010

-Slate approval for Fred Bassett for November 2010

**Treasurer's Report
Committee Reports**

Show Committee-Next meeting is 6/1/10 at 6:30 at the CIKC building; premium list still isn't done, AKC had shows pending despite received approval letters, should be approved by 5/19/10, Carolyn will call BaRay on 5/19/10 to tell them the premium is ready to roll; had a judge cancel, working on getting that situated

Training Committee-meeting was held 5/11/10 at 6:30; next session of classes starts 6/7/10, Puppy at 6:00, Beginning Obedience starting at 7:00. Gretchen Keim is instructing and Renee Foley will be assisting.

Legislative Committee-No Report

Judges Committee-No Report

EarthDog Committee-Meeting to be held 6/1/10 at 6:00 at the CIKC building

Unfinished Business

Mat cleaning-thanks to all who helped, fun was had by all.
Membership Application/Dues State-

ment-Cheri Hagen presented updated copies, very clean and professional, including more pertinent information. Renee Clayton made a motion to accept the new Membership Application and Dues Statement as presented. Christine Asay seconded. Motion passed.\ Thanks to Cheri Hagen for getting the floor steamer for the club.

New Business

Bank Accounts-Cheri Hagen made a motion to modify the bank accounts in order to save the service fees. Christine Asay seconded. Motion passed.

Cheri Hagen made a motion to adjourn. Renee Clayton seconded. Motion passed.

Meeting adjourned at 7:25 pm.

Respectfully Submitted,
Gretchen Keim

pigmentation due to aging is acceptable. **Teeth/Bite:** Complete dentition of 42 teeth (20 upper, 22 lower), strong, correctly placed, meeting in a correct scissors bite, lower incisors touching inside of upper incisors. Missing M3s are permissible. A level bite is accepted. Dropped lower incisors, in an otherwise normal bite, are not indicative of a skeletal malocclusion and are considered only a minor deviation. **Serious**



Fault – Lips – Drooling or wet mouth. **Disqualification** – Expression/mask: Complete lack of mask. Teeth/Bite: Any missing teeth other than M3s.

Neck, Topline, Body

Neck: Muscular, well set on shoulders, of sufficient length to allow for proud head carriage; blends smoothly into withers. No dewlap. **Topline:** Withers set above a firm level back that flows smoothly into a gently sloping croup. Rump not higher than withers. **Body:** Chest is broad, roomy, and deep, reaching at least to the level of the elbows, pronounced pro–sternum. Fore and rear quarters well muscled. **Ribs:** Well–sprung, oval. **Underline:** Only slightly tucked up. **Loin:** Broad, compact, strong, well muscled. **Croup:** Broad, relatively long, gently sloped, flowing smoothly into root of tail. **Tail:** While standing relaxed, tail hangs straight down with the last vertebrae reaching to or below the hock. In movement, tail is ideally carried no higher than the level of the back, with a curve up at the end permitted. An exuberant tail carriage, though higher than ideal, should not be confused with a high, incorrectly placed tail. **Serious Fault** – High tail carriage with tail carried over back due to short, level croup.

Forequarters
Shoulder Angulation: Well laid–back and well muscled; the shoulder meets the upper arm at approximately a right angle allowing for excellent reach. Shoulder and upper arm rather long and about equal in length. **Elbows:** Close to body, neither in nor out when standing or gaitting. **Forelegs:** Well–boned, muscular, straight



and parallel to each other. **Pasterns:** Strong, firm and straight when viewed from front, slightly sloping when viewed from side. **Dewclaws:** Usually present. **Feet:** Turn neither in nor out, rounded, tight, toes well arched (cat foot), pads always black.

Hindquarters

Angulation: In balance with forequarters. The rear assembly is powerful, muscular and well–boned. **Legs:** Viewed from the rear, the legs are straight and parallel, with stifles and paws turned neither in nor out, placed widely enough apart to match a properly built body. **Thighs:** Up-

per and lower of equal length, slanting and strongly muscled. **Stifles:** Angle clearly defined. **Hocks:** Strong of bone, distinctly angled between lower thigh and rear pastern; well let down. **Dewclaws:** Rear dewclaws may be present. **Feet:** Turned neither in nor out, but may be slightly elongated compared to forefeet. Toes arched; pads always black.

Coat

Leonbergers have a medium to long, water resistant, double coat on the body and short fine hair on the muzzle and front of limbs. Outer coat is medium–soft to coarse and lies flat. It is straight, with some generalized wave permitted. Mature males carry a mane, which extends over neck and chest. The undercoat is soft and dense, although it may be less so in summer months or warmer climates. In spite of the double coat, the outline of the body is always recognizable.

Leonbergers have distinct feathering on backside of forelegs and ample feathering on breeches and some ear feathering. Tail is very well furnished. Females are less likely to carry a coat as long as males and this disparity must not be a consideration when judged against the male.

Natural appearance of the coat is essential to breed type. Therefore, except for neatening of the feet, Leonbergers are to be presented naturally, with no alteration of the coat, to include sculpting, trimming of whiskers, or any other alterations whatsoever. **NO RIBBON SHALL BE AWARDED TO A DOG WHOSE COAT APPEARS TO BE ALTERED, AND JUDGES ARE TO ERR ON THE SIDE OF WITHOLDING**



Upcoming Events

AHGC Conformation Shows and All Breed Obedience/Rally Trials June 5 & 6, 2010 Chu-giak

Yukon Kennel Club Conformation/Obedience/Rally Shows June 10, 11, 12, 2010 Whitehorse, Yukon Territory, Canada

Alaska Kennel Club Conformation Shows—June 26 & 27, 2010 South High School.

Kenai Kennel Club Conformation Shows and Agility Trials—July 9, 10 & 11, 2010 Skyview High School, Soldotna

Interested in Advertising in the Newsletter?
We are now offering space for ads!
Litter Ads, For Sale Ads, Business Ads, Seminar Ads

Place them here for these incredible rates!

Full Page Ad—1 mo. \$20.00 2 or more mo. \$10.00/mo.
Half Page Ad—1 mo. \$10.00 2 or more mo. \$5.00/mo.
Quarter Page Ad—1 mo. \$5.00 2 mo. \$7.00, 3 mo. \$10.00,
6 mo. \$20.00
Business Card Ad—6 mo. \$10.00, 12 mo. \$15.00

COOK INLET KENNEL CLUB, INC.
PO Box 873432
Wasilla AK 99687



This is the official newsletter of Cook Inlet Kennel Club, Inc. The purpose of this newsletter is to inform and educate those interested in the sport of Purebred Dogs. Cook Inlet Kennel Club provides this information for educational purposes and assumes no liability for its use. Materials herein represent the opinion of the individual authors, and are not necessarily endorsed by the editor or Cook Inlet Kennel Club, Inc.

Monthly Schedule

June 2010

Sun	Mon	Tue	Wed	Thu	Fri	Sat
		1 Show Committee Meeting 6:30 p.m. General Meeting 7:00 P.M.	2	3 Show 'n Go 7:00 p.m.	4 Show 'n Go 7:00 p.m.	5 AHGC Conformation, Obedience & Rally Shows, Chugiak
6 AHGC Conf., Obed. & Rally Shows, Chugiak Colleen McDowell Private Classes 4—5 p.m.	7 Puppy Class 6:00 p.m. Beg. Obed. 7:00 p.m.	8	9	10 Show 'n Go 7:00 p.m.	11 Show 'n Go 7:00 p.m. Yukon K.C. Shows, Whitehorse	12 Yukon K.C. Shows, Whitehorse
13 Yukon K.C. Shows, Whitehorse Colleen McDowell Private Classes 4—5 p.m.	14 Puppy Class 6:00 p.m. Beg. Obed. 7:00 p.m.	15 Board Meeting 7:00 P.M.	16	17 Show 'n Go 7:00 p.m.	18 Show 'n Go 7:00 p.m.	19
20 Colleen McDowell Private Classes 4—5 p.m.	21 Puppy Class 6:00 p.m. Beg. Obed. 7:00 p.m.	22	23	24 Show 'n Go 7:00 p.m.	25 No Show 'n Go	26 AKKC Conformation Show South High, Anchorage
27 AKKC Conformation Show South High, Anchorage	28 Puppy Class 6:00 p.m. Beg. Obed. 7:00 p.m.	29	30			

Leonberger Standard

Cont. from Page 3

OF RIBBONS IF THERE IS ANY DOUBT.

Fault: Parted or curly coat.

Color

Coat colors are lion–yellow, golden to red and red–brown, also sand colored (cream, pale yellow) and all combinations thereof, always with a black mask. All colors may have black tips (some with long black tips) on the outer coat. All coat colors are accompanied by a lighter colored undercoat and feathering which blends well with the dominant body color. A small, unobtrusive stripe or white patch on the chest and some white hairs on toes is tolerated.

Disqualification: Any coat color other than those listed. White hair on chest that exceeds 5 inches in width; white extending beyond toes.

Gait

The Leonberger has a ground–covering, even and balanced gait. The stride is powerful, easy, free and elastic, with good reach and strong drive giving the impression of effortless power. In motion, the Leonberger maintains a level topline.

Viewed from the front and from behind, forelegs and hind legs travel straight. As the dog's speed increases, the legs tend to converge toward the centerline. Essential to sound movement is the balance of correct front and rear assemblies and anatomically correct overall structure.

Temperament

The gentle character and even temperament of the Leonberger is of utmost importance for fulfilling their role as a family companion. The Leonberger is self–assured and calm, with a steady, playful demeanor. He is willing to please and possesses a good capacity for learning. The Leonberger exhibits a marked friendliness towards children and is at ease in all situations, never showing fear, shyness or aggression. Quarrelsomeness or hostility towards people or dogs in normal situations, or an unwarranted show of timidity or nervousness,

is not in keeping with Leonberger character and shall be penalized to the extent that it is effectively eliminated from competition.

Faults

Any deviation from these specifications is a fault. In determining whether a fault is minor, serious, or major, these two factors should be used as a guide:

Deviation – The extent to which it deviates from the standard; and **Impact** – The extent to which such deviation would actually affect the Leonberger's ability to fulfill its role as a family companion, working ability or phenotype.

Disqualifications

Mask – Complete lack of mask

Teeth – Any missing teeth other than M3s.

Color – Any coat color other than those listed. White hair on chest exceeding 5 inches in width, white extending beyond toes.

For more information on the Leonberger, check out the parent club

website at www.leonbergerclubofamerica.com



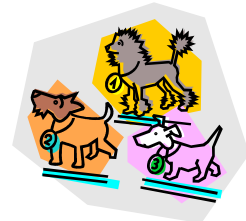
The show season is upon us!!!

We need all our members help with the **August** show - Just **two months** away. The jobs include set-up, take-down, ring stewards, health fair, catalog sales, Pooper scoopers, Hospitality, and Judges transportation (especially if you are not showing).

Remember any club is only as good as its **volunteers**. We need everyone, in any capacity, small or large to help us make this a successful show!

If you would like to help out and have not signed up, please email:

cookinletkennelclub@hotmail.com



The Mat-Su Animal Control needs your help. They are looking for volunteers who can spend time with the animals, dogs and cats, that are at the shelter. It doesn't require a lot of time and you will be doing something which will greatly improve the animals time at the shelter. If you have any questions you can contact me, Jon at 376-1651 or jfz@gci.net or call



CIKC is asking for trophy donations for our shows in August and November. If you would like to donate to the trophy fund, please contact Judi Rideout at rideout@mtaonline.net.

A Silent Auction will be held at the August Show. If you have items that you would like to donate please drop them off at the building in the donation box by July 20th. Items should be Dog related if possible and in good condition. Any questions contact Judi Rideout at rideout@mtaonline.net or 745-3426