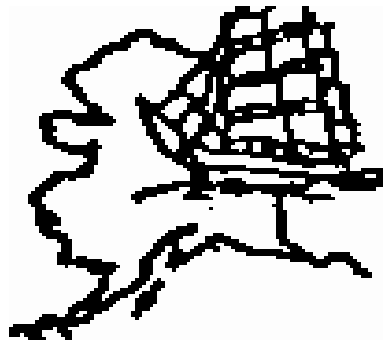


The Cook Inlet Kennel Club GAZETTE



SPOTLIGHT ON A BREED:

THE CLUMBER SPANIEL

One of the original nine breeds registered by the AKC, the Clumber Spaniel's long and low build is particularly unique among spaniels. Although not as speedy as other sporting dogs, the Clumber will work all day, trotting along in his signature slow, rolling gait. He may appear dignified and pensive, but he possesses great enthusiasm for both work and play. The breed possesses a beautiful white coat and may have lemon or orange-colored markings.

Some doubt exists about the origin of the Clumber Spaniel, but most believe the breed originated in 18th-century France with ancestors such as the Basset Hound and early Alpine Spaniel. The Clumber was prized for his ability to hunt in heavy cover and his quiet style, which allowed him to come up very close to the game. The breed received its modern name when a large French kennel moved Duke of Newcastle's Clumber Park at the start of the French Revolution in an effort to save its dogs.

Playful and loving, the Clumber Spaniel fits in well with families and other animals. They enjoy daily walks, but they are not for those who want a jogging partner. Clumbers shed moderately year-round and tend to slobber and drool more than other breeds. An intelligent and independent thinker, the Clumber

responds best to positive training.



THE STANDARD

General Appearance

The Clumber Spaniel is a long, low, substantial dog. His heavy brow, deep chest, straight forelegs, powerful hindquarters, massive bone and good feet all give him the power and endurance to move through dense underbrush in pursuit of game. His white coat enables him to be seen by the hunter as he works within gun range. His stature is dignified, his expression pensive, but at the same time he shows great enthusiasm for work and play.



Size, Proportion, Substance

The Clumber is rectangular in shape possessing massive bone structure and has the appearance of great power. The ideal height for dogs is 18 to 20 inches at the withers and for bitches is 17 to 19 inches at the withers. The ideal length to

- 2010 Board Members**
- President— Carolyn Tolson (745-2322)
 - V-President—Cheri Hagen
 - Treasurer—Kristine Asay
 - Corresponding Secretary— Rene'e Clayton
 - Recording Secretary - Gretchen Keim
 - Directors - Mike Chester, Kathy Kochendorfer, Judi Rideout, Jon Zylstra
- 2010 Committee Chairs**
- Judges Committee -
 - Training Committee -
 - Show Committee— Carolyn Tolson
 - Hospitality Committee - Rene'e Clayton
 - Earthdog Committee - Carolyn Tolson

**COME JOIN US AT OUR
NEXT GENERAL
MEMBERSHIP
MEETING!**

January 4th AT 7:00 P.M.

Inside this issue:

General Meeting Minutes	2
Board Meeting Minutes	2
The Clumber Spaniel	3 & 5
Upcoming Events	3
Advertising Rates	3
Calendar	4

General Membership Meeting December 7, 2010

Meeting called to order at 7:00pm.

Gretchen Keim made a motion to accept the previous General Membership minutes as published. Renee Clayton seconded. Motion passed.

Corresponding Secretary's Report-

- Wells Fargo Business Checking Statement
- Wells Fargo Business Market Rate Account Statement
- Invoice from UPS store
- MEA Bill
- Invoice from Rowan Pacific Rim Decorators
- MTA Bill
- Four A's newsletter
- Application-Judges Panel from AKC
- Return address for members Lisa Vaughn, Art Brundage, and Judy Rideout
- Thank you note from Deborah Ross for HIT basket
- Thank you note from Annella Co-

- per
- Insurance information from Equisure
- Wells Fargo Business Checking Statement
- Wells Fargo Business Market Rate Account Statement
- Return address for members Mike Weber and Rae Posey
- Receipt of dues from Mike & Julie Fulton, The Wallings, Cheri Hagen, Barbara Jo Stanley, Vikki Gross, The -Betts, the Jansens, Darlene Jewell, Mary Hermon, Mabel Wimmer, Beverly Labani
- Invoice from The Frontiersman
- Enstar bill

Treasurer's Report-

Committee Reports

Show Committee-show and clean up went well, the final figures are not in yet. Notes/cards received from judges were read aloud. Christine Asay thanked all of those who donated food.

Training Committee-New session of Puppy and Super Puppy classes will be starting the first part of February.

Legislative Committee-No Report

Judges Committee-the next meeting will be 12/14/10 at 7:00 pm at the build-

ing.

Election of New Members

First Readings

- Stephen Bowerman
- Marcia Fischer

Second Readings

- Tracie East
- Jamie Quinn & Josh Morris

Motions passed. Welcome new members!

Nominations- There were no nominations from the floor for President, Vice-President, Treasurer, Corresponding Secretary, Recording Secretary, or Board positions. Nominations were closed and board is slated as nominated by the Committee.

- President- Carolyn Tolson
- Vice President-Cheri Hagen
- Treasurer-Christine Asay
- Recording Secretary-Gretchen Keim
- Corresponding Secretary-Linda Cunningham
- Board-Mike Chester, Jon Zylstra, Judi Rideout, and Renee Clayton

There was no scheduled board meeting in the month of December!

General Meeting Minutes Cont.

Elections will be held during the January 2011 General Membership Meeting

Unfinished Business

Fun Match-was held 11/21/10 and we made \$245.00, everyone had fun and it went well.

Christmas Party-will be held on 12/12/10 at 2:00, bring a gift for the Chinese auction of no more that \$20, bring a gift for young kids so they don't feel left out.

New Business

Back to Back Rally/Obedience Trials

-Casey Hessinger brought up the idea of having back to back obedience and rally trials during the November show for 2011. Would have to limit the number of entries per trial and judges can't work for more than 8 hours per day. Gretchen Keim made a motion to hold back to back Obedience and Rally Tri-

als for November 2011, Kim Beam seconded. Motion passed.

Mike Chester made a motion to adjourn. Christine Asay seconded. Motion passed.

Meeting adjourned at 7:25 pm

Respectfully submitted,

Gretchen Keim



The Clumber Spaniel
Cont. from Pg. 1

height is 11 to 9 measured from the withers to the base of the tail and from the floor to the withers. Dogs weigh between 70 and 85 pounds and bitches weigh between 55 and 70 pounds.

Head

The head is massive with a marked stop and heavy brow. The top skull is flat with a pronounced occiput. A slight furrow runs between the eyes and up through the center of the skull. The muzzle is broad and deep to facilitate retrieving many species of game. The nose is large, square and colored shades of brown, which include beige, rose and cherry. The flews of the upper jaw are strongly developed and overlap



the lower jaw to give a square look when viewed from the side. A scissors bite is preferred. The eyes are dark amber in color, large, soft in expression, and deep set in either a diamond shaped rim or a rim with a "V" on the bottom and a curve on the top. Some haw may show but excessive haw is undesirable. Prominent or round shaped eyes are to be penalized. Excessive tearing or evidence of entropion or ectropion is to be penalized. Ears are broad on top with thick ear leather.



The ears are triangular in shape with a rounded lower edge, set low and attached to the skull at approximately eye level.

Neck, Topline, Body

The Clumber should have a long neck with some slackness of throat or presence of dewlap not to be faulted. The neck is strong and muscular, fitting into a well laid back shoulder. The back is straight, firm, long and level. The brisket is deep and the

ribs well sprung. The chest is deep and wide. The loin arches slightly. The tail is well feathered and set on just below the line of back; its trimming minimal, serving to tidy the feathering to allow for a natural appearance and outline. The tail is normally carried level with the topline or slightly elevated, never down between the rear legs. The tail may be docked or left natural, both being of equal value. If docked, the tail's length should be in keeping with the overall proportion of the adult dog. If natural, the tailbone should extend to the point of hock, but should not extend to the ground.

Forequarters

The Clumber shoulder is well laid back. The upper arm is of sufficient length to place the elbow under the highest point of the shoulder. The forelegs are short, straight and heavy in bone, with elbows held close to the body. Pasterns are strong and only slightly sloped. The front feet are large, compact and have thick pads that act as shock absorbers. Removal of dewclaws is optional.

Hindquarters

The thighs are heavily muscled and, when viewed from behind, the rear is round and broad. The stifle shows good functional angulation, and hock to heel is short and perpendicular to the ground. Lack of angulation is objectionable. The rear feet are not as large or as round as on the front feet but compact, with thick pads and are of substantial

size.

Coat

The body coat is dense, straight and flat. It is of good weather resistant texture, which is soft to the touch, not harsh. Ears are slightly feathered with straight hair. Feathering on the legs and belly is moderate. The Clumber has a good neck frill and on no condition should his throat be shaved. Evidence of shaving is to be penalized. The hair on the feet should be



Upcoming Events

January 22 & 23, 2011
AKKC & KKC Conformation Show—Egan Center, Anchorage

AKC Obedience and Rally Seminar February 12 & 13, 2011—CIKC



Interested in Advertising in the Newsletter?
We are now offering space for ads!
Litter Ads, For Sale Ads, Business Ads,
Seminar Ads

Place them here for these incredible rates!

Full Page Ad—1 mo. \$20.00 2 or more mo. \$10.00/mo.
Half Page Ad—1 mo. \$10.00 2 or more mo. \$5.00/mo.
Quarter Page Ad—1 mo. \$5.00 2 mo. \$7.00, 3 mo. \$10.00,
6 mo. \$20.00
Business Card Ad—6 mo. \$10.00, 12 mo. \$15.00

COOK INLET KENNEL CLUB, INC.

PO Box 873432
Wasilla AK 99687

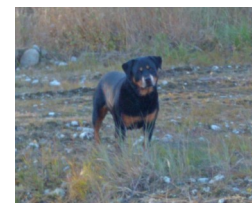
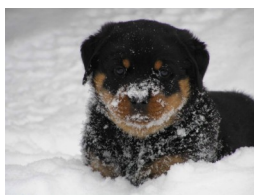


This is the official newsletter of Cook Inlet Kennel Club, Inc. The purpose of this newsletter is to inform and educate those interested in the sport of Purebred Dogs. Cook Inlet Kennel Club provides this information for educational purposes and assumes no liability for its use. Materials herein represent the opinion of the individual authors, and are not necessarily endorsed by the editor or Cook Inlet Kennel Club, Inc.

Monthly Schedule

January 2011

Sun	Mon	Tue	Wed	Thu	Fri	Sat
						1 New Years Day
2	3	4 General Membership Meeting 7:00 p.m.	5 Puppy Class 7:00	6 Show N Go 7:00 p.m.	7 Show N Go 7:00 p.m.	8 Rene'e Clayton Private Lessons 4:00—6:00 p.m.
9 AKKC Fun Match ACT Bldg. Anchorage	10	11	12 Puppy Class 7:00	13 Show N Go 7:00 p.m.	14 Show N Go 7:00 p.m.	15 Rene'e Clayton Private Lessons 4:00—6:00 p.m.
16	17 Martin Luther King Day	18 Board Meeting	19 Puppy Class 7:00	20 Show N Go 7:00 p.m.	21 No Show N Go	22 KKC Conformation Show Egan Center
23 AKKC Conformation Show Egan Center	24	25	26 Puppy Class 7:00	27 Show N Go 7:00 p.m.	28 Show N Go 7:00 p.m.	29 Rene'e Clayton Private Lessons 4:00—6:00 p.m.
30	31					



STONERIDGE KENNELS

Producing happy, healthy Rottweiler puppies and adults on an all-natural diet.

Check out Columbia River Natural
Pet Foods at

columbiarivernaturalpetfoods.com

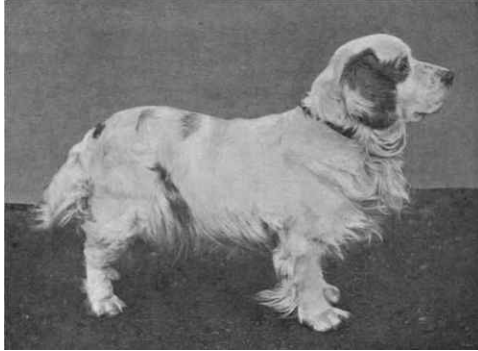
Columbia River Natural Pet Foods is available in Alaska from Stoneridge Kennels. Contact Cheri at stonerdg@alaska.net for more information, product availability and pricing.

The Clumber Spaniel
Cont. from page 3

trimmed neatly to show their natural outline and for utility in the field. The rear legs may be trimmed up to the point of the hock. Tail feathering may be tidied. Trimming of whiskers is optional.

Color and Markings

The Clumber is primarily a white dog with lemon color or orange color markings. Markings are frequently seen on one or both ears and the face. Facial markings include color around one or both eyes, freckling on the muzzle and a spot on top of the head.



A head with lemon/orange markings and an all-white head are of equal value. Freckles on the legs and/or a spot near the root of the tail are also frequently seen and acceptable. The body should have as few markings as possible.

Gait

The Clumber moves easily and freely with good reach in front and strong drive from

behind, neither crossing over nor elbowing out. The hocks drive in a straight line without rocking or twisting. Because of his wide body and short legs he tends to roll slightly. The proper Clumber roll occurs when the dog, with the correct proportion, reaches forward with the rear leg toward the centerline of travel and rotates the hip downward while the back remains level and straight. The gait is comfortable and can be maintained at a

steady trot for a day of work in the field without exhaustion.

Temperament

The Clumber Spaniel is a gentle, loyal and affectionate dog. He possesses an intrinsic desire to please. An intelligent and independent thinker, he displays determination and a strong sense of purpose while at work. A dog of dignity, the Clumber Spaniel may sometimes seem aloof with people unknown to him, but in time he will display his playful and loving nature. The Clumber Spaniel should never be hostile or aggressive; neither is acceptable and should not be condoned.

For more information on the Clumber Spaniel, including health concerns, go to www.clumbers.org.

The Nominating Committee has nominated the following members:

President—Carolyn Tolson

Vice President—Cheri Hagen

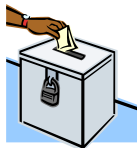
Treasurer—Christine Asay

Corresponding Secretary—Linda Cunningham

Recording Secretary—Grechen Keim

Board—Mike Chester, Judi Rideout, Jon Zylstra, Rene'e Clayton

Voting for 2011 officers will take place at the January General Membership Meeting.



Remember -
Sign Up for 2011
Committees
Starts at the
January meeting!
Come and sign
up to help the
club out!

**HAPPY
NEW YEAR!**



**GOOD LUCK TO
ALL
IN THE
2011
DOG SHOW
SEASON!**

**The Better Companion
At
The Regine Dog Training Facility**

**Doggie Daycare
Open Play Times**

Specialized group classes

- Behavior
- Nose Work
- Flyball
- Mushing/Skijor
- Agility
- Rally
- Clicker

Give us a call at
357-2521

Or visit our website at
www.BetterCompanion.com

1400 Regine Ave., Wasilla
Off mi. 4 Fairview Loop